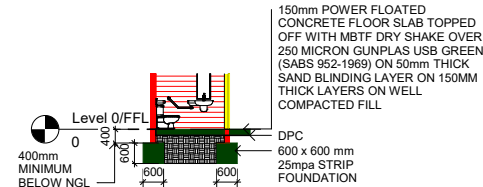
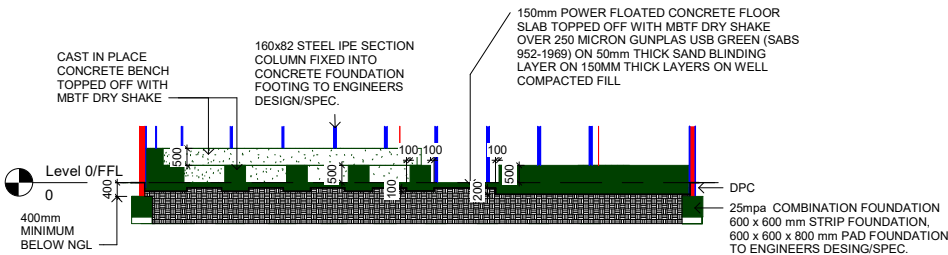


FOUNDATION DETAIL A-A SCALE 1-100



FOUNDATION DETAIL B-B SCALE 1-100



FOUNDATION DETAIL C-C SCALE 1-100

FOUNDATION PLAN SCALE 1-100

Door Schedule							
Construction Type	Count	Door Panel Height	Family	Family and Type	Finish	Frame Material	Frame Thickness

Type 2	1	2060	Doors_IntSgl	Doors_IntSgl: 910x2110mm	Varnished	Pine	32
Type 1	1	2060	Doors_IntSgl	Doors_IntSgl: 810x2110mm	Varnished	Pine	32
Type 1	1	2060	Doors_IntSgl	Doors_IntSgl: 810x2110mm	Varnished	Pine	32
Type 1	1	2060	Doors_IntSgl	Doors_IntSgl: 810x2110mm	Varnished	Pine	32
Type 1	1	2060	Doors_IntSgl	Doors_IntSgl: 810x2110mm	Varnished	Pine	32
Type 1	1	2060	Doors_IntSgl	Doors_IntSgl: 810x2110mm	Varnished	Pine	32
Type 1	1	2060	Doors_IntSgl	Doors_IntSgl: 810x2110mm	Varnished	Pine	32

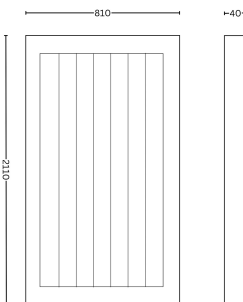
Window Schedule						
Construction Type	Count	Description	Comments	Sill Height	Type Comments	Model

Type 1	1	Top Hung Opening Out	Standard Double Glazed	1600	6mm Clear Safety Glass	Kenzo Aluminium Range Charcoal
Type 1	1	Top Hung Opening Out	Standard Double Glazed	1600	6mm Clear Safety Glass	Kenzo Aluminium Range Charcoal
Type 1	1	Top Hung Opening Out	Standard Double Glazed	1600	6mm Clear Safety Glass	Kenzo Aluminium Range Charcoal
Type 1	1	Top Hung Opening Out	Standard Double Glazed	1600	6mm Clear Safety Glass	Kenzo Aluminium Range Charcoal
Type 1	1	Top Hung Opening Out	Standard Double Glazed	1600	6mm Clear Safety Glass	Kenzo Aluminium Range Charcoal
Type 1	1	Top Hung Opening Out	Standard Double Glazed	1600	6mm Clear Safety Glass	Kenzo Aluminium Range Charcoal
Type 1	1	Top Hung Opening Out	Standard Double Glazed	1600	6mm Clear Safety Glass	Kenzo Aluminium Range Charcoal

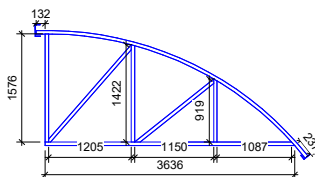
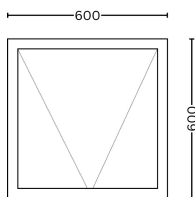
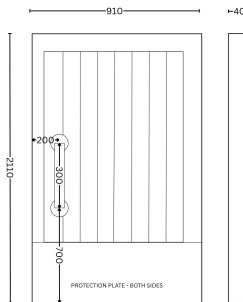
FLOOR AREA AND FENESTRATION CALCULATIONS

ROOM	FLOOR AREA	WINDOW NO.	WINDOW SIZE	WINDOW AREA	% AS PER SANS 10400XA	COMPLIANT
WC 1	3 SQM	W1	600(h) x 600(w)	0.36	12%	YES
WC 2	3 SQM	W1	600(h) x 600 (w)	0.36	12%	YES
WC 3	3 SQM	W1	600(h) x 600(w)	0.36	12%	YES
WC 4	3.6 SQM	W1	600 h) x 600(w)	0.36	10%	YES
WC 5	3 SQM	W1	600(h) x 600(w)	0.36	12%	YES
WC 6	3 SQM	W1	600(h) x 600(w)	0.36	12%	YES
WC 7	3 SQM	W1	600(h) x 600(w)	0.36	12%	YES
TOTAL	21,6SQM			2,52	11.66	YES
TOTAL NET FLOOR AREA COMPLIES WITH MAX. 15% REQUIREMENT BY SANS 10400XA						

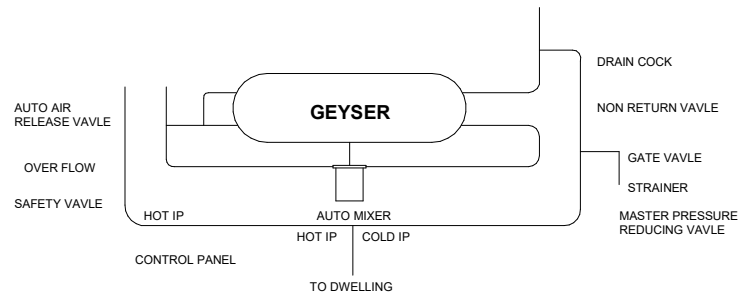
TYPE 1



TYPE 2



HALF BOWSTRING TRUSS DETAIL SCALE 1:50



MUNICIPAL INFORMATION

ERF NUMBER	327	ADDITIONAL AREA	284,80m ²
ALLOTMENT	CARNARVON	EXISTING AREA	807,36m ²
AREA OF ERF	2137,023m ²		
TOTAL NEW FLOOR AREA	284,80m ²		
COVERAGE PERCENTAGE	13,33%		

COPYWRITE. THIS DRAWING MAY NOT BE REPRODUCED OR TRANSMITTED IN ANY WAY OR FORM BY ANY MEANS IN PART OR IN WHOLE WITHOUT THE PERMISSION OF THE DEPARTMENT OF ROADS & PUBLIC WORKS

ALL WORK TO BE CARRIED OUT IN ACCORDANCE WITH SABS CODE 0400 N.B.R & LOCAL AUTHORITYBYLAWS.

USE FIGURED DIMENSIONS ONLY. DO NOT SCALE

ALL LEVELS AND DIMENSIONS TO BE VERIFIED PRIOR TO COMMENCEMENT OF ANY WORK.

CONSTRUCTION WITHOUT THE APPLICABLE MUNICIPAL APPROVAL IS AT OWNERS RISK.

THE CONTRACTOR IS RESPONSIBLE FOR THE FOLLOWING:
-SETTING OUT OF THE BUILDING WITH REFERENCE TO BOUNDARIES AND BUILDING LINES
-BUILD IN APPROVED D.P.C'S TO ALL EXTERNAL WALLS, AROUND WINDOWS, UNDER SURFACE BEDS AND PROVIDE VERTICAL D.P.C'S TO ALL CHANGE IN FLOOR LEVELS.
-DRAWINGS PREPARED ON SURFACE EXAMINATION OF SITE. FOUNDATIONS TO BE MIN. 300MM BELOW N.G.L
-BUILD IN PRE CAST CONCRETE LINTELS ABOVE ALL OPENINGS, UNLESS OTHERWISE DIRECTED.
-ALL BUILDERS RUBBLE TO BE REMOVED FROM PREMISES AND SITE LEFT CLEAN.
-IDENTIFY EXISTING SERVICES AND PROTECT FROM DAMAGE.

NORTHERN CAPE PROVINCE
DEPARTMENT OF ROADS AND
PUBLIC WORKS

PROVINSIE VAN NOORD-KAAP
DEPARTEMENT VAN PAAIE EN
OPENBARE WERKE



PHONDO LOMNTLA KAPA ISEBE
IEZO THUTHO INDLELA NE
LEZEMISEBENZI

PROFENSI YA KAPA BOKONE
LEFAPHA LA DIPALANGWA
DITSELA LE DITIRO

APPROVED BY THE DEPT. OF

NAME:.....SIGNATURE:.....DATE: _/_/

PROJECT: CARNARVON COMMUNITY
SQUARE

ERF: 327 ALLOTMENT: CARNARVON

CLIENT: DEPARTMENT OF ECONOMIC
DEVELOPMENT AND TOURISM

DRAWING NAME: COUNCIL SUBMISSION

SCALE: AS SHOWN REVISION

DATE: OCTOBER 2025 SHEET: 3

DRAWN BY: NCDRPW
A. MILLER (PSAT63294684)

DRAWING REFERENCE: